

# MAPLE LEAVES

Journal of

THE CANADIAN PHILATELIC SOCIETY OF GREAT BRITAIN

FOUNDED 1938

INCORPORATED 1946

Edited by JAMES E. WOODS

2 Hengrave Road, Honor Oak Park, London, S.E.23.

Opinions expressed in the various articles in this journal are those of the writers and not necessarily endorsed by the Society.

Published Every Second Month by the Canadian Philatelic Society of Great Britain

Issued Free to Members.

Additional copies, 3/6 each.

---

Vol. 10 No. 1

OCTOBER 1963

Whole No. 85

---

## LONDON REUNION—16th NOVEMBER 1963

Plans are now taking shape for the ReUnion at the Shaftesbury Hotel, Monmouth Street, London, W.C.2.

In order that the meeting shall be truly representative of our Society some of the Local Groups have kindly agreed to provide displays. Only six frames are available and so others will be asked on future occasions. These displays will provide talking points for members during the afternoon perambulation.

On past occasions we have had a successful auction and this will be repeated provided some members will donate Lots to help defray the costs of the afternoon. These can be brought on the day or, preferably, sent to me beforehand. After tea Graham George, the President-elect of our Society, has very kindly agreed to give a talk and display from his collection.

On the financial side a charge of 3/- a head will be collected during the afternoon except from those members who donate Lots to the Auction. Tea, at 5/6 a head, will be available if required.

If any members are interested in making up a party for lunch beforehand at the Hotel will they please let me know and arrangements will be made.

(R. S. B. Greenhill, The Shieling, Village Way, Little Chalfont, Bucks).

## LIBRARY NOTES

Students of R.P.O. cancellations will be glad to know that we now have a copy of T.P.G. Shaw's new book on the subject. This is a great advance on the check list previously published as it contains historical notes on the many Lines, in addition to an up to date listing of all known cancellations.

A new edition of Holmes Catalogue is due in the autumn and a copy will be in your Library as soon as it is available.

# THE B.C. CROWN CANCELLATION

by E. A. Smythies, C.I.E., F.R.P.S.L., F.C.P.S. (840)

In September 1880, Messrs. Pritchard and Andrews recorded in their Proof Book an impression of a new Crown Cancellation (destined for post offices in British Columbia). As this book is now in the Philatelic Foundation, New York, I wrote to Miss Ethel Harper asking if I could possibly have a photograph of it, and she very kindly sent me an excellent photograph (see fig. 1) showing all the details of design of the genuine crown, for which all collectors of Canadian cancellations will be most grateful.

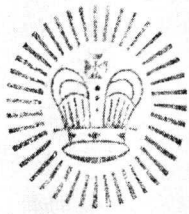


Photo Houtzamer. Fig. 1.



Photo Houtzamer. Fig. 3

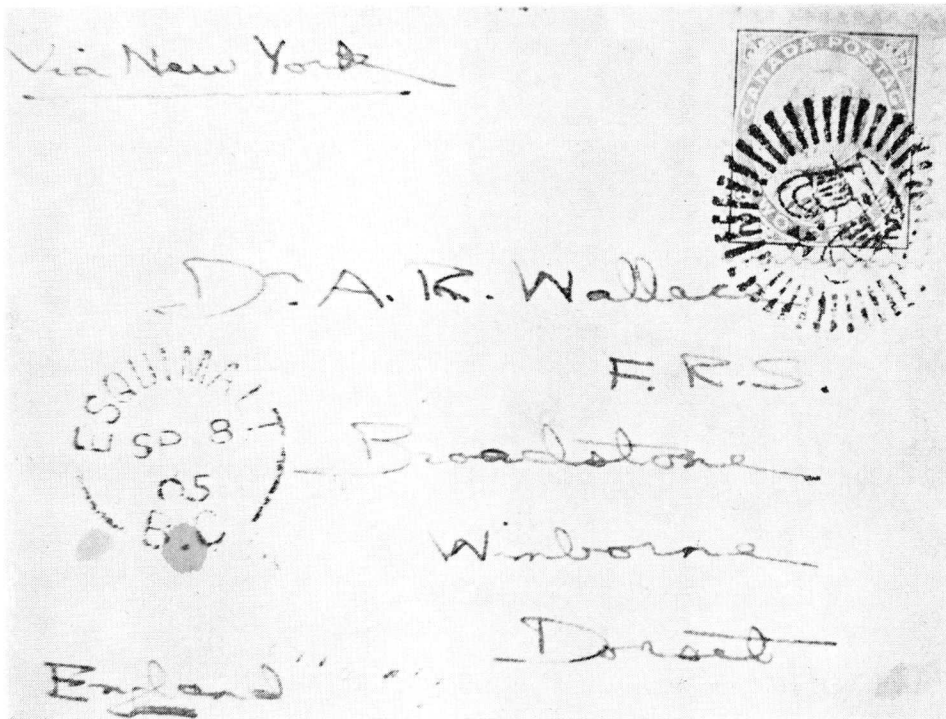


Photo Houtzamer.

Fig. 2. Reproduced by courtesy S. F. Cohen

Boggs records that two of these hammers were sent to Victoria B.C. and we know from genuine covers (see fig. 2) that similar hammers were also used at Esquimalt and possibly other B.C. post offices. A careful examination of a number of strikes soon revealed that there were two hammers at least showing slightly different details of design. This is not surprising as we find the same phenomenon with this firm's duplex hammers—a good example being the three L.7 (1) subtypes of Toronto 1885-89 (see Duplex handbook). In the case of these B.C. Crown hammers, the noticeable differings are as follows: Type A being the Proof copy, Type B was in use in Esquimalt:—

#### Details

#### Enlarged sketch of Crown



Type A



Type B

(i) No. of rays in surrounding circle	40	40
(ii) No. of dots below diadem	3	2
(iii) No. of strokes in right hand arch	4	5
(iv) Edge of upper Crown	Bulges slightly outwards both sides	Practically straight both sides
(v) Max. width of upper Crown	12.5 m.m.	11.75 m.m.

We have thus established that there were at least two slightly different hammers (there may have been more).

That both these hammers were used for very long periods is proved by the following strikes noted.

#### Type A

Early strikes (i) Proof copy of 1880.

(ii) L.Q. 15c. perf.  $11\frac{1}{2}$  x 12—say 1881.

(iii) S.Q. 1c. & 3c. Montreal printings, 1881-85.

Late strikes (iv) K. Edward VII 2c. pair and others 1903.

## Type B

Early strikes (i) S.Q. 3c. perf.  $11\frac{1}{2} \times 12$  (say 1881).

(ii) Cover, Victoria B.C. (1881).

(iii) S.Q. 1c., 3c., 6c. Montreal printings 1881–85.

Late strikes. Numerous, Q.V. numerals, K.E.V.II, Quebec issue.

(Type B appears to be much commoner than A, especially after 1900).

It is rather surprising that strikes can be found on the Quebec Centenary issue of 1908 as clear as strikes of 1881, 27 years earlier! A good example of a late strike is shown (fig. 3).

So much for the genuine strikes. Up to date I have only seen one type of forgery (of about a dozen of the Ottawa crown!) but quite an interesting one. It will be recalled that Jarrett in his 1929 catalogue illustrated (No. 854) not a photograph nor a tracing but a sketch giving the general appearance of this crown but differing appreciably in details. For example, there are 36 rays instead of 40 in the outer circle, usually 4 dots instead of 3 below the diadem, the jewels in the lower band are large, and there are other differences. Now the forger, having no other illustration for comparison, assumed that Jarrett's sketch was correct, and made a very good copy of it, **complete with all mistakes!** Also, realising that fine strikes are more valuable than poor ones, he usually made very beautiful ones, easy to check. I have seen four copies of this forgery—three on the Registered stamps—and they were all immaculate. See fig. 4). I have been



Photo Houtzamer. Fig. 4.

asked the usual question—"How do you know it is not another genuine hammer?" It is an accurate copy of Jarrett's illustration of 1929 and quite unlike either of the two known genuine hammers. Pritchard and Andrews did not make such bad replicas of their hammers. I recently received for opinion a lovely strike in bright purple and someone had made the challenging comment:—"Who says it is a forgery? Let them try and prove it!" When returning it, I noted it showed all the typical mistakes of the 1929 sketch and was unlike either of the two known hammers, that it had been struck in modern purple ink (less than 50 years old) on a loose stamp off cover, and all these points added up to a forgery. If this is accepted, it follows that all four identical strikes seen (i.e. with 36 rays, etc.) were forgeries.

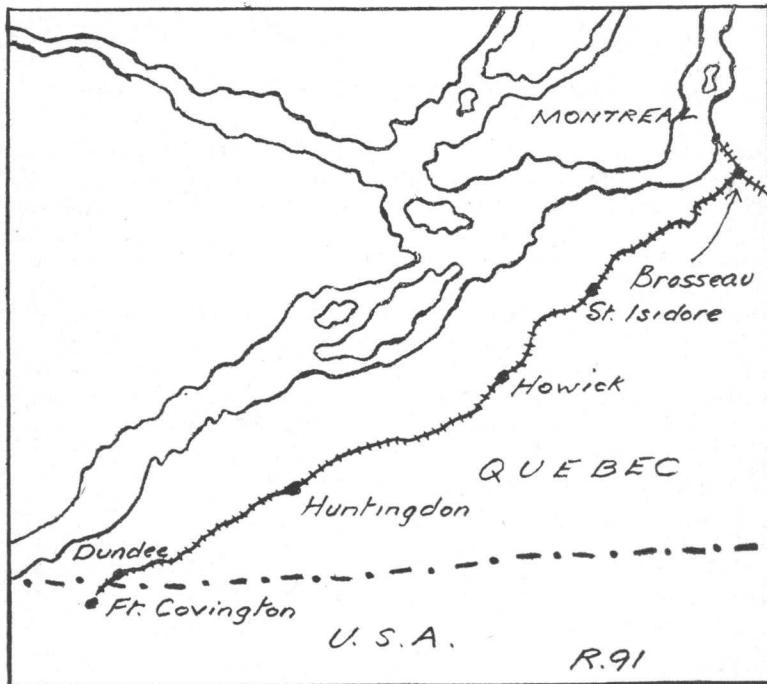
After experience with the Ottawa Crown, it is rather surprising that only one B.C. Crown forgery has been noted to date!



# EARLY CANADIAN RAILWAY POST OFFICES

by L. F. GILLAM (568)

## PART XXVIII. THE MONTREAL & CHAMPLAIN JUNCTION RAILWAY



This railway was incorporated in 1870 to build from a point on the former Champlain & St. Lawrence Railroad to St. Remi. Construction did not begin until 1880 when a line westward of Brossseau for 12 miles to St. Isidore was built. This was opened for traffic on 1st January, 1881. An extension to Howick (15 miles) was completed in 1883 and later in the year a further extension to Huntingdon (35 miles) was built.

This line was again extended over the international boundary to Fort Covington (1 mile) by the construction of the United States and Canada Railroad, also in 1883.

In 1880 while the first section of the line was under construction the railway was leased to the Grand Trunk Railway and was completely absorbed in 1893.

Railway post offices appear to have been introduced on this railway as soon as it was opened for traffic and postmarks reading "Mon. & Champ. Jn. Rwy." are known to have been used. Subsequently postmarks reading Montreal & Dundee (or abbreviations thereof) were used. These in turn were superseded by those reading Mont. & Ft. Covington. The latter are still in use.

N.B.—This railway should not be confused with the older Montreal & Champlain Railroad which was formed from the amalgamation of the Champlain & St. Lawrence and the Montreal & New York in 1857.

---

## THE CANADIAN RED CHRISTMAS POSTMARK

by **B. Lyndhurst Ogden (10)** and **R. S. B. Greenhill (446)**

Every now and then in our pursuit of the study of cancellations an item appears which makes one ponder as to its significance, and, on enquiry, it is found that nothing is recorded. Such an item came to us recently in the form of the Canadian Red Christmas Postmark and, before the mists of time descend upon it we have endeavored to reconstruct its history.

The story seems to have started in 1926 when the Winnipeg Post Office inaugurated a scheme of guaranteed local delivery of Christmas cards. It was known as the Advance Posting Service and enabled the public to post their locally addressed cards in special posting boxes so that delivery could be made on the 23rd or 24th December.

The service operated in the following Cities:—

Winnipeg — 1926 to 1938.  
Saint John, N.B.—1931 to 1939.  
Halifax — 1932 to 1939.  
Toronto — 1933 to 1940 (?1941).  
Montreal — 1938 and 1939.  
Barrie — 1942 to 1945.

Slogan cancellations advertising the Advance Posting Service are known from Winnipeg (1929: 1931–32: 1935–37), Toronto (1934–1941) and Saint John (1941).

In order that the Postal officials could distinguish this mail, and ensure it not being delivered early, a red machine cancellation was applied. As this was a requirement of the service it is assumed that examples exist from all the forementioned Cities. Copies are known to the authors from Winnipeg in 1931, Toronto in 1933 and 1940 and Saint John in 1934.

This information is necessarily brief, and the writers will welcome any examples of these red postmarks and slogan cancellations for loan or purchase. Meanwhile they express their appreciation for help given by the Post Office Department in Ottawa.

# CLIPPINGS FROM B.N.A. MAGAZINES

Contributed by R. J. Duncan, F.C.P.S.

## No. 58—WHAT DO YOU KNOW ABOUT THIS OVERPRINT?



RECENTLY G. Ross Workman (BNAPS 845) sent us the stamps illustrated above, together with correspondence he had received from the Post Office Department concerning them.

Mr. Workman is treasurer of the Toronto Stamp Collectors Club, and he says that, except for Dr. L. S. Holmes, none of the members can remember having seen any of these overprints before. He has shown them to Dr. Holmes, who states that he is sure that some 15 years ago someone sent him an exploded picture of one of the Ottawa types.

Following are replies received from the post office in answer to a query from Mr. Workman:

(1)

"Dear Mr. Workman,

"I acknowledge receipt of your letter of the 4th November and the enclosure of 4 x 2c King George V postage stamps overprinted with words.

"Our first impression is that these stamps are overprinted to identify the office of sale. A more recent development of this practice was the use of Post Office numbers overprinted on low denomination postage stamps. Further research will be made, however, in an attempt to obtain more factual information."

(2)

"Dear Mr. Workman,

"Further to my acknowledgment of the 9th November, to your letter of the 4th November, I return herewith the four overprinted stamps.

"A search of our files has revealed that

stamps precancelled with the name of the selling office have been issued since 1904. Details of the actual plates used for precancelling stamps are lacking. It has been found, however, that for the stamp precancelled 'Toronto Ontario 125', the latter number refers to the Sub-Post Office located on the premises of the Robert Simpson Co., Toronto. Stamps were precancelled with the name of the office selling the stamps and handling the mail prepaid with these stamps, in order to prevent misuse of precancelled stamps.

"Early in 1930, as the result of requests from large commercial firms that have nation-wide mailings of advertising matter, the names of offices was discontinued and the office numbers were introduced."

As can be seen from the above letters, available information regarding the overprints on these stamps is very sketchy. If other members of BNAPS have copies of these stamps, especially on cover, perhaps enough information can be brought to light to prove whether they are genuine, or otherwise. It is hoped that this problem will instigate a little research into the Admirals in the hope of turning up something concrete in the way of evidence.

Reading from left to right in the above illustration, Mr. Workman reports that he has the following number of copies: "Postage Paid at Ottawa", 3 copies; "Postage Paid at Ottawa, Canada", 2 copies; "Postage Paid at Ottawa" (with lines), 3 copies; "Toronto, Ontario, 125", 3 copies. What do other members have to report?

B.N.A. TOPICS  
FEBRUARY 1955

## LETTERS TO THE EDITOR

Dear Mr. Woods,

### 3c. BROWN ADMIRAL

In your February issue of "Maple Leaves" I was surprised to read Mr. Anderson's query as to the cause of the so-called "File Marks" on the 3 cent value. Knowing Mr. Anderson's very deep knowledge of Line Engraved stamps, and his sense of humour, I assumed he was merely throwing out a hot potato to see who would catch it.

I, for my part, can only accept Mr. Marlers explanation of "damage done to the transfer roll by a file or something similar".

Both Mr. Anderson and Mr. Harvey are overlooking the fact that the transfer rolls are positive and the relief lines are naturally raised and would be quite liable to damage by any rough surface coming across these lines. Again it will be found that these white lines appear on the printings from a number of plates and in each case there is a difference which could be faulty relief lines on the transfer roll being corrected by a file, especially when one considers these plates were made during 1919 when workmanship was at a very low ebb.

I think Mr. Harvey, in his letter, is confusing the retouching done to some of the Working Dies and Plates. In each of these cases the engraved lines would be

negative and would be recessed and if anybody was clever enough to dig down into these recessed lines they would take up ink and not show up in white.

Yours sincerely,  
A. E. STEPHENSON  
(1)



Dear Jim,

In the issues of February and October, 1961 you published a list, with subsequent additions of "Part Inner Circle" Postmarks by W. M. C. Willcock. The attached tracing shows an addition to the listing—New Hamburg, Ont., which is I understand the only new town to be reported to Mr. Willcock in the last two years.

Yours sincerely,  
CHARLES HOLLINGSWORTH.

*Why not advertise in*  
**"MAPLE LEAVES"**

DETAILS OF RATES FROM  
THE ADVERTISING MANAGER

# CANADIAN TRANSPORTATION POSTMARKS

by T. P. G. Shaw

## A REVIEW

News of the publication of this work has been warmly greeted by those many collectors of Canadian railway and travelling postmarks who first had their appetite whetted by the author's original handbook nearly twenty years ago.

The long-anticipated new edition has been worth waiting for and it will undoubtedly serve as the vade mecum of R.P.O. collectors for many years to come.

The listings have been brought up to date and include all new postmarks that have been recorded in the numerous addenda that the author has published during the intervening period.

In addition the postmarks of Newfoundland R.P.O.s and T.P.O.s are also included for the first time together with new tables of clerks' names and a listing of those members who have reported original strikes. A table giving comparative Scott and Gibbons catalogue numbers will be found of considerable use to British collectors who are not familiar with the former publication.

This is not, and cannot be, the last word as far as R.P.O.s are concerned. New strikes continue to be introduced and occasionally old ones are still "discovered" for the first time. Nevertheless the listings are as complete as it is possible for them to be having regard for the time which must elapse between the submission of manuscripts to the printer and eventual publication.

This work will undoubtedly give an added fillip to the fascinating study which Canadian R.P.O.s represents and it deserves and will undoubtedly achieve record sales. Certainly no collector of R.P.O.s can afford to grope about in the dark by failing to purchase such a comprehensive work. No one who knows the author's original work will need any encouragement to add this book to his shelves; no one who is yet unacquainted with the variety and scope of the catalogue will regret the modest outlay once the book has been obtained.

One note of criticism. Some of the historical information is inaccurate, and of necessity it is incomplete. Indeed the historical side of R.P.O. collecting is one which demands and deserves the fullest possible treatment in a separate work.

"R.P.O."

---

### *Subscriptions now due*

If you require a Bankers' Order, please contact the  
Treasurer now.

# AN INTRODUCTION TO CANADIAN MACHINE CANCELLATIONS

by Ken Barlow (976)

## Introduction

Having accumulated postmarks of Canada for several years, it has only been recently that I have found the opportunity for organising them into a collection. Various articles on slogans, duplexes, etc. in "Maple Leaves" have helped me to a great extent, but there are still several groups or types of cancellation which appear to be almost untouched, such as rectangular and circular registration cancellations, postage due markings, and the subject of this article, machine cancellations. It is with this group that I have encountered the most difficulty, as there appear to be so many different types and I could find no published data at all to guide me. However, with the aid of a large floor area to spread all the items, and much changing around, I finally evolved a system whereby I could classify the various types and which has proved quite effective for my own collection. In the hope that these few notes may assist others in a similar arduous task I would like to offer my arrangement subject to certain qualifications.

The group of cancellations covered are all current, though the types are gradually changing. No attempt has been made to sort out obsolete or early types as I have insufficient material, and I am sure that this must have been done earlier by experts, if I could only find the source. The type numbering is purely arbitrary and bears no relation whatsoever to any previous articles which may exist or to any chronological sequence.

## Types

All machine cancellations consist of two parts, the circular dater and a series of continuous wavy lines, generally seven though a few have six. It is with the dater itself that I have concerned myself as being the cause of all the confusion. In general it consists of an outer circle inside which the location of the source is described circumferentially, with the time and date horizontally in the centre. The later consists generally of 3 slugs which can be adjusted by the postmaster, showing time, date and year respectively in any arrangement that the user feels fit, inverted if need be!

The description of the source forms the first breakdown into types, due to the common use of abbreviations. Hence I started on this basis.

Type 1. Town, Province and Canada all in full.

Type 2. Town in full, Province abbreviated and Canada in full.

Type 3. Town and Province in full—no Canada.

Type 4 & 5. Town in full, Province abbreviated.

The breakdown from then on is on the basis of the style of lettering or "type" to the printer.

Suffix 'a' has a wide and large style of printing throughout.





Type 1a.



Type 1b.



Type 1c.



Type 1d.



Type 1e.



Type 2a.



Type 2b.



Type 2c.



Type 2d.



Type 2e.



Type 3a.



Type 3b.



Type 3a.



Type 3e.



Type 4a



Type 4b.



Type 4c



Type 5a



Type 5b.



Type 5c



Type 5d



Type 6



Type 7

Suffix 'b' is similar though slightly smaller, but has the year in larger figures than suffix 'a'.

Suffix 'c' has similar letters to 'a' for the town and province, but smaller and narrower letter for Canada.

Suffix 'd' is reversed, with the smaller letters for the town and province with Canada large.

Suffix 'e' has all letters small and narrow.

The illustrations should show the differences better than an explanation.

These suffixes apply mostly to types 1, 2 and 3, producing, theoretically, 15 varieties, though I have only found 14. Type 3d being undiscovered to date.

Type 4 is a tough one to classify, as on examination the abbreviated letters actually vary all over the map, so I have settled for 3 varieties as illustrated. Again the difference is in the style of lettering.

Type 5 really is the earliest one used though still current in many towns. It can easily be distinguished by very small figures for the year. A little experience distinguishes the other characteristics. Four varieties are illustrated. Suffix 'a' has a circle of about  $\frac{3}{4}$  in. diameter with large letters; Suffix 'b' about  $\frac{3}{4}$  in. diameter with large letters; Suffix 'c' same size but smaller letters.

5d. is an oddity, the province being spelt out in full, though all other characteristics stay the same. Hartney is the only town known by itself with this type.

Types 6 and 7 are also odd ones, being individualistic. Those of you familiar with the cancellations of the U.S.A. will recognise it as being a common usage south of the line.

Other odds and ends in my collection, besides the older types are a number of items coming from Ottawa and used on official mail where the words 'Free' or 'Postage Paid' are included in the wavy bars or replace them. But these are beyond the scope of this article.

## Conclusions

So far in my own collection I have identified 410 odd different machines from the major varieties noted, though I know from experience that in some of the larger cities several machines of similar types are in use, differentiated only slightly by letter spacing, periods and dater. Variations in date arrangement are not counted, although I have over 120 of these in my own collection.

Some day, with more time at my disposal and with some assistance, I would be interested in amplifying the meagre data published here, with the idea of presenting a complete history of the use of cancelling machines in Canada. If any other members of the Society are interested in this project, I would be very pleased to have them contact me directly. Any further data available would be greatly appreciated.

# Amendments to Membership to 24th AUGUST 1963

## New Members.

1439	STEINHART, A. L., 3886 Bathurst St., Apt. 203 Downsview, Ont., Canada.	RPO
1440	WEGG, G. S., 28 Kilbarry Rd., Toronto 7, Canada.	
1441	THOMPSON, Major A. K., 59 Wickham Rd., Beckenham, Kent.	P.
1442	McGOWAN, L. C., 63 Walnut St., Johnston 9, R.I., U.S.A.	PS,P

## Resignations.

682	R. W. Bush.
207	J. F. Bisset.
843	C. M. Chandler.
541	Rev. G. F. Dewey.
1308	R. G. B. Dickson.
1344	Rev. H. LaFrance.
291	L. Langley.
1137	D. F. Wilkins.

## Deaths.

243	R. S. Macnab.
113	W. A. Spalding.
917	J. G. B. Walker.
848	H. Wellesley-Ashe.

## Members removed under Rule 6—owing two years subscription.

366	Bosworth, W. N.	1279	Hickey, F. J.	603	Richardson, R. M.
552	Brayshay, S.	1165	Hill, Miss L.	865	Sadler, A.
1091	Burton, J. D.	771	Hollamby, W. A. E.	1331	Sellers, N. T.
1224	Clark, E. A.	245	Jackson, F.	1255	Skofac, M.
1170	Clem, W. A. (Jr.)	1249	Jaco, Dr. M. T.	1287	Smith, F.
1305	Clow, T. J.	161	Jamieson, R. A.	1307	Solmi, A.
475	Cook, J. R.	923	La Londe, L. F.	1060	Thomas, P.
1276	Dominic, L. P.	453	Lewis, G. P.	1035	Tomkins, E. J.
1256	Eatock, A. J.	614	McCutcheon, J. E.	779	Totten, Mrs. E. A.
755	Edmonds, H. A.	1180	Merriken, E.	763	Ward, M. J.
335	Foster, G. E.	720	Miller, Dr. J. H.	1199	Waters, P.
1339	Franks, D. G.	789	Petri, P.	929	Watson, R. M.
710	Goody, H.	685	Phillips, S. W.	551	Wilson, R.
1346	Griffith, K.	1325	Pilgrim, E. B.	1001	Woodhead, C.
651	Harmer, H. R.	1083	Rennie, D. W.		

## Change or Address.

750	BACK, D. E., 18 Chestnut Drive, St. Albans, Herts.
982	CARTSAIRS, Dr. M. W., Hill Rise, Witney, Oxon.
188	EATON, Lt./Col., F. E., 1491 West 56th Ave., Vancouver, 14, Canada.
50	FALCONER, W. L., "Green Lanes", 61 Merryton Cresc., Nairn.
1347	MOFFATT, Dr. W. G., Vines Rd. (Charlton) R.D.1. Ballston Lake, N.Y., U.S.A.
780	LUM, Cpl. S., RCAF Stn., Vancouver, Richmond, B.C., Canada.
1393	McLENNAN, J. A., 507 Richard St., Vancouver 2., Canada.
973	McCUSKER, J. J. Jr., Univ. of Pittsburgh, Tower 'C', Room 602, 3955 Forbes Ave., Pittsburgh, Pa., U.S.A.
1318	REZANOWICH, A., 6235 - 30th Ave., Montreal, 36 P.Q., Canada.
1006	SALTER, T. H., 86 Clifton St., Bideford, Devon.
1306	STEELE, A. C., BFES Lancaster School, BFPO 36.
81	WHITE, W., 14 Lattan Rd., Glasgow, S.3.

## Amendments to previous listings.

1415	PIGGOTT, E. R., 12 Leverett Ave. (not Leucret).
947	Hornby, F.—delete.
	Delete in last issue—288, HILL, J.R., M.D. Leave entry 1066, HILL, J.R.

## Information required of new address—last known address given.

1061	KENYON, S. S., 10943—118 St. Edmonton, Alta.
104	BETTS, F. E. M., Perham House, The Triangle, Ludgershall, Andover, Hants.
901	DORIAN, Miss Ann, 14 St. Andrews Rd., Ilford, Essex.

Net Change: —52.

New Total: 753.

**CANADIAN PHILATELIC SOCIETY OF GREAT BRITAIN**  
**BALANCE SHEET AND FINANCIAL STATEMENTS**  
**for year ended 30th September, 1962**  
**(a) General Fund**

	1961	1961	£	£ s. d.	£ s. d.	£ s. d.
<b>EXPENDITURE</b>						
Printing and Stationery ...	46	£	59	12	0	
<b>Affiliation Fees:</b>						
Scottish Association ...	1					573
Congress of Great Britain ...	3		3	3	0	33
British Philatelic Association ...	3		3	3	0	15
	7		6	6	0	
<b>"Maple Leaves":</b>						
Printing ...	652		578	19	7	
Blocks and Photographs ...	79		70	8	2	
Distribution ...	91		90	6	2	
	822		739	13	11	
<b>Administration:</b>						
Secretary ...	15		31	2	2	
Treasurer ...	22		43	18	6	
Editor ...	32		27	12	6	
	69		102	13	2	
<b>Other Expenses:</b>						
Insurance ...	4		4	12	0	
Grant to Library Fund ...	—		10	0	0	
Grant to Preenaceal Study Circle ...	4		2	19	0	
Wreath ...	—		3	0	0	
Foreign Exchange—Net Loss ...	—		8	11	3	
	8		29	2	3	
<b>Amount written off:</b>						
Internat. Exhibition Photograph A/C. ...	12		—	—	—	
	964		937	7	4	
Total Expenditure for Year ...	27		—	—	—	
Surplus for Year ...	—		—	—	—	
	£991		£937	7	4	
<b>INCOME</b>						
<b>Subscriptions:</b>						
Amount due for the year ...	586		573	0	0	
Proportion of Life Members' Subs. ...	26		33	15	0	
	612		606	15	0	
LESS: Amounts written off...	18		25	14	2	
	594		581	0	10	
<b>"Maple Leaves":</b>						
Advertising: ...	225		168	17	1	
Space Ads. ...			24	15	11	
Small Ads. ...			—	—	—	
	18		193	13	0	
Sale of Back Numbers, Reprints & Index ...	243		4	7	5	
	95		198	0	5	
<b>Exchange Packet surplus transferred</b>						
Stock Interest ...	3		—	—	—	
Donations ...	4		—	—	—	
Profit from Sale of Handbooks ...	44		29	12	2	
Profit from Enlarged Stamp Prints ...	8		7	11	8	
	59		37	3	10	
Total Income for the Year ...	991		846	5	1	
Deficit for Year ...	—		91	2	3	
	£991		£937	7	4	

**(b) Life Membership Fund**

Expenditure	£ s. d.	Income	£ s. d.
Transfer to Revenue Account...	33 15 0	Life Memberships granted during year ...	23 14 0
Balance carried forward at 30th September, 1962 ...	191 6 8	Donation ...	2 2 0
		Stock Interest ...	7 15 6
		Balance brought forward at 1st October, 1961 ...	191 10 2
	£225 1 8		£225 1 8

**(c) Library Fund**

Expenditure	£ s. d.	Income	£ s. d.
Books and Photographs ...	16 13 1	Donations ...	— — —
Postages and Stationery ...	7 2 6	Sales of Books ...	7 0
Insurance ...	8 0	Postages recovered... ..	3 13 5
Balance carried forward at 30th September, 1962 ...	3 17 4	Grant for 1961/62 ...	10 0 0
		Balance brought forward at 1st October, 1961... ..	14 0 6
	£28 0 11		£28 0 11

**(d) Exchange Packet Account**

Expenditure	£ s. d.	Income	£ s. d.
Amount transferred to General Fund ...	30 0 0	Cash Surplus for year ...	33 0 3
Balance carried forward at 30th September, 1962 ...	42 10 1	Balance brought forward at 1st October, 1961 ...	39 9 10
	£72 10 1		£72 10 1

**(e) Repairs and Renewals Account**

Expenditure	£ s. d.	Income	£ s. d.
Balance carried forward at 30th September, 1962 ...	5 9 0	Balance brought forward at 1st October, 1961. . .	5 9 0
	£5 9 0		£5 9 0

**(f) Convention Fund**

Expenditure	£ s. d.	Income	£ s. d.
Exhibition—Net cost ...	16 12 3	Auction Net Profit:	
Dinner—net cost ...	14 6	Commission ... 55 14 9	
Coach Tours—net cost ...	6 7 6	Gift Lots .. 23 5 0	
Stationery, etc.			78 19 9
Badges ... 3 8 9		LESS:	
Entry Forms ... 6 1 3		Catalogues 21. 8.0	
Booking Forms ... 5 18 10		Postages, etc. 5.10.8	
	15 8 10		26 18 8
Unsold Lots returned and retained by Society for re-sale	6 10 0		52 1 1
	45 12 7	Donation ...	1 0 0
Net Profit 1962 Convention ...	7 8 6		
	£53 1 1		£53 1 1
Further Accounts paid in respect of 1961 Convention:		Balance in hand after 1961 Convention ...	185 8 7
Dinner Tickets, Convention Programmes and Menu Cards .. 6 15 9		Profit on 1962 Convention ...	7 8 6
Hire of Frames .. 3 0 0			
	9 15 9		
Balance in hand after 1962 Convention ...	183 1 4		
	£192 17 1		£192 17 1



## BALANCE SHEET as at 30th SEPTEMBER, 1962

Liabilities	£	s.	d.	Assets	£	s.	d.
General Fund:				Investments:			
Balance 1st Oct., 1961	105.18.2			£80 L.C.C. 5½% Stock 1977/81			
LESS:				at cost	80	0	0
Deficit for year ended				£100 Leeds Mortgage	100	0	0
30th Sept., 1962	91. 2.3			Cash at Bankers...	31	9	7
		14	15	Cash in hand:			
Life Membership Fund	191	6	8	Exchange Packet Secretary	42	10	1
Library Fund	3	17	4	Librarian	14	4	
Convention Fund	136	12	9				
Exchange Packet Surplus Acc.	42	10	1	Total cash and investments	254	14	0
Repairs & Renewals Account	5	9	0	Other Assets:			
				Stock in hand — Handbooks	66	14	4
Total Society Funds	394	11	9	Stamp Prints	6	0	0
Sundry Creditors:—				Sundry Debtors & Accounts Prepaid:			
Members' subscriptions paid				Subscriptions	64	11	5
in advance	50	15	7	Advertisers	42	4	10
Advertising prepaid	7	2	9	J. R. Cooke (Handbooks)	23	8	9
B.N.A.P.S. (Handbooks)	5	3	3				
		£457	13			£457	13
			4				4

J. P. MACASKIE  
Hon. Auditor.

### THE LONDON SECTION

Since reporting last in the April "Maple Leaves" the 1962/63 season has closed. The annual contest for the "Beaver" Cup resulted in a most worthy win for Bill Williams with his study of the ½c. 1868/78. The Competition was judged by Commander G. Bridgmore Brown, R.N.R., and his frank comments upon all entries were welcomed by the owners as guides to the future. The Judge concluded the evening with a display from his own collection of Bermuda, indeed a joy to behold.

At the Annual Meeting Jack Harvey, as required by our Rules, passed over the responsibilities of the Chair to George Manley. Fresh blood was infused into the Council by the election of Edmund Chellow and so the Section, financially sound but, as always, wanting more members, prepares for the new season when the following programme has been arranged:—

19th September—Your puzzles discussed.

17th October—American Stamp Club.

14th November—Mr. W. E. Lea.

5th December—Auction.

16th January—Chairman's evening.

13th February—The Admiral Issue.

12th March—Invited displays.

9th April—Cup Competition.

7th May—Annual General Meeting.

If any members who live around London would like to join us in our meetings at 50, Pall Mall, please write to the London Secretary, Roland Greenhill, The Shielling, Village Way, Little Chalfont, Bucks.

***Just Published by B.N.A.P.S.***

*(Our Sister Society in Canada)*

**CANADIAN  
FANCY CANCELLATIONS  
OF THE NINETEENTH  
CENTURY**

by

Dr. K. M. Day, F.R.P.S.L. and  
E. A. Smythies, C.I.E., F.R.P.S.L., F.C.P.S.

Limited Edition, Paper Bound 21/6 (post paid)

Now obtainable from:

Stanley F. Cohen, 51 Westfield Road,  
Edgbaston, Birmingham 15

## *Two New* **Handbooks**

NOW AVAILABLE FROM THE BRITISH NORTH AMERICA  
PHILATELIC SOCIETY:

### **CONSTANT PLATE VARIETIES OF THE**

#### **CANADA SMALL QUEENS**

by HANS REICHE ..... \$1.25

### **CANADIAN STAMPS WITH PERFORATED INITIALS**

(Second edition) ..... \$1.50

The above books are obtainable at the prices quoted from:

**R. J. Woolley, Apt. 405, 1520 Bathurst St., Toronto 10, Ont.**

**Gordon P. Lewis, 37 Eldomar Ave., Brampton, Ontario**

Now obtainable in the U.K. (Price £1 the two, postage included,  
or 10/6 per copy) from:—

**STANLEY COHEN, 51 Westfield Road, Birmingham 15.**

## **EXCHANGE PACKET**

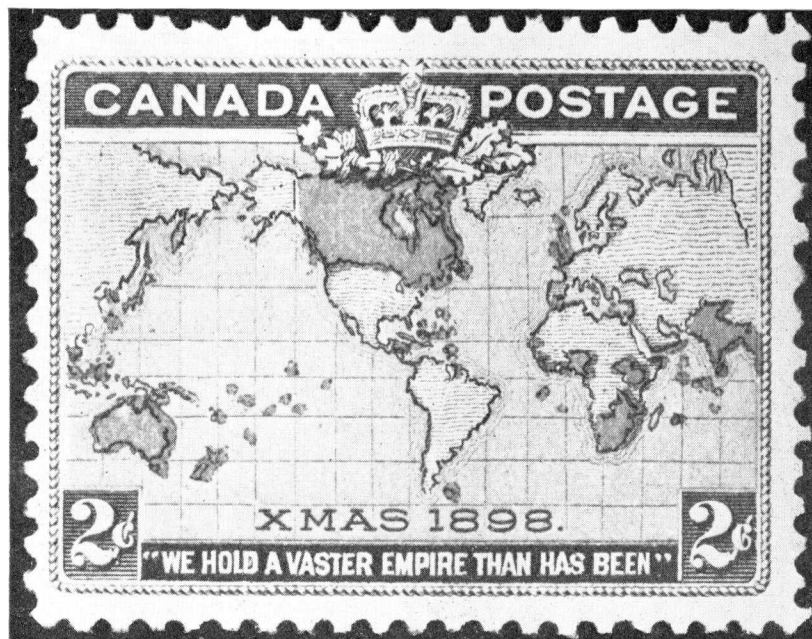
THE NEW PACKET SECRETARY REQUIRES A  
STEADY FLOW OF MATERIAL. ALL TYPES OF  
B.N.A. ITEMS WELCOME.

Please send to:

**J. A. Bielby**

**“Ailsa Craig,” 194, Skipton Road,  
HARROGATE, YORKS.**

# CANADA THE 1898 MAP STAMP



*Have you ordered your  
copy yet, of our  
Second Handbook?*

The subject being the 1898 Map Stamp, the Author, Frederick Tomlinson, F.C.P.S., is well known for his studies on this fascinating issue. The contents are right up to date and the Handbook is profusely illustrated. An ideal guide to the beginner and specialist alike. Copies are now available from Stanley Cohen, 51, Westfield Road, Birmingham, 15 at 12/6 each (\$2.00) post paid. Order your copy now and **Please make all remittances payable to the CPS of G.B.**

Keep close to your hobby by making  
sure of your regular copy of the

**“PHILATELIC  
MAGAZINE”**

Edited by **TOM MORGAN**  
9d. FORTNIGHTLY FROM YOUR  
LOCAL DEALER OR  
NEWSAGENT  
ANNUAL SUBSCRIPTION - 22/6

published by  
**HARRIS PUBLICATION LTD.**

at whose offices you will find an  
unrivalled stock of

**BOOKS, ALBUMS AND  
ACCESSORIES**

Send For Our Price List  
27 MAIDEN LANE, STRAND,  
LONDON, W.C.2.

Tel: COVent Garden 1006-7  
(A few mins. from Charing X Stn.)

*This space  
is*

**TO LET**

*Please apply to*

**STANLEY F. COHEN  
51 WESTFIELD ROAD  
BIRMINGHAM 15**

**B.N.A.  
BY AUCTION  
NOVEMBER 28/9**

with especial strength in

**CANADA**

including a block of the  
6d. and a mint 1/-

**CATALOGUE 10/-**

**ROBSON LOWE LTD.**

50 PALL MALL, LONDON, S.W.1

Telephone: TRAfalgar 4034

When replying to this advertisement please  
mention that you saw it in "Maple Leaves"

**DO IT NOW  
and  
Avoid Disappointment —**

**IF** your collection is included in your  
Comprehensive Policy covering the  
contents of your home, you may think  
that you have a complete insurance on  
your stamps—**but you haven't!**

**WHY NOT** withdraw your collection  
from that Policy and use the premium  
saved to insure the collection under our  
“**ALL RISKS**” collectors' Policy,  
specially designed by collectors for  
collectors?

Details willingly sent by—

**PHILATELIC INSURANCES  
LTD.**

STAMP INSURANCE SPECIALISTS  
52 The Terrace, Torquay Devon

Tel.: TORQUAY 7083

## CLASSIFIED ANNOUNCEMENTS

Reserved for member's small classified advertisements. Special price 2d. a word for C.P.S.G.B. members only.

### WANTED

5 CENTS EDWARDS. Pairs, strips, blocks. To buy or borrow. Dr. Hollingsworth, 17, Mellish Road, Walsall, Staffs.

Squared Circles on covers, on Jubilees and on Maps wanted for cash or trade. Have hundreds duplicates for trading. Also wanted Large Head Queens in superb Mint or used condition. Must be well-centred and o.g. or lightly cancelled. S. Cohen, 51, Westfield Road, Birmingham, 15, England.

Railroads, Numerals, Registered covers, Duplex, Squared Circles, Stampless, towns to 1905—Buy or Trade. Siverts, Box 425, Wilmington, Delaware, U.S.A.

Don't send Siverts any Registered covers—I'll do as well or better. Send him that other stuff and send the Registered to me. H. W. Harrison, Box 5780, Pikesville 8, Maryland, U.S.A.

MOON or MOTO cancels on cover or card. Paul Brown, 21, Nelles Road South, Grimsby, Ontario, Canada.

Wanted, Purchase or trade. 10 cts. small Queens, used copies for study of shades and periods of use. Also would like to correspond with other collectors interested in this stamp. D. A. Crawford, Box 249, Chester, N.S., Canada.

1882-97 Small Queen  $\frac{1}{2}$  ct. Proofs, interesting covers and cancellations, particularly the "Bleeker S." error on cover. Offers to James E. Woods, 2, Hengrave Road, Honor Oak Park, London, S.E.

Wanted. Mint plate blocks Canada for cash.—G. S. Barwise, 290, Heathwood Road, Cardiff.

1937 Coronation cancels of Fredericton, Moncton, Regina (not Terminal) and Windsor. W. L. Falconer, "Green Lanes," Nairn, Scotland.

Wanted. Kerr's and Barncroft (full face) labels. State price.—Cobb, Badsey, Evesham, Worcs.

Fine B.N.A. material, collections, single rare items, interesting cancellations. Offers to James E. Woods, 2, Hengrave Road, Honor Oak Park, London, S.E.23.

### PERIODICALS

Canada Calling is one of the interesting features frequently appearing in the Philatelic Magazine. Price 9d. from your newsagent or local dealer.

### FOR SALE

Canada town dated cancels, Victoria to Elizabeth. Fine strikes. Your Wants welcome. Frank Smith, 96, Humbercrest Blvd., Toronto 9, Ontario, Canada.

Canadian, Mint and used, 1869 to date. Plate Blocks 1942 on. 1st Day, Slogan, Covers, Many Canadian varieties. Your Want List welcomed. W. L. Anthony, 259, Kaiser Cres., Oshawa, Ontario, Canada.

Small 3 cents Orange-red, 100 good copies 30/-. Loxston, 38, Albermarle Road, East Barnet, Herts.

Canadian first day covers next five issues of 5 cts. Denomination, only 7s. 6d. Plate blocks per set of four, 5 cts. denomination, 10s. Other values at low prices. Also in stock complete Canada, U.S.A., Vatican, Ghana, United Nations.—Woodman, Dixville, Quebec, Canada.



# ALL of CANADA Service

from :

**NORMAN TODD** 74, LINDEN RD.  
**BOGNOR REGIS**

Albums, Blocks, Booklet Panes, Booklets, Canadian News Letter, Catalogues, Classics, Coils, Handbooks, Hawid strips, New Issues, Officials, Perforated O.H.M.S., Plate Blocks, Postage Dues, Precancels, Queens, Registered, Semi-Official Airs, Stationery Varieties.

## CANADA

AND

## PROVINCES

Our stock from Pence Issues to Modern plate blocks is one of the most complete in existence today. Your enquiries welcomed.

PRICE LIST 50 cents  
(Refundable with first order)

**George S. Wegg Limited**

28, KILBARRY ROAD,

TORONTO 7, CANADA

### THE CANADIAN PHILATELIC SOCIETY OF GREAT BRITAIN

1962 - 63

**President:** Dr. C. W. HOLLINGSWORTH, 17 Mellish Rd., Walsall.

**Secretary:** Dr. C. W. HOLLINGSWORTH, 17 Mellish Rd., Walsall.

**Treasurer:** A. F. L. MCGREGOR, 151 High Street, Elgin, Morayshire, Scotland.

**Librarian:** R. S. B. GREENHILL, The Shieling, Village Way,  
Little Chalfont, Amersham, Bucks.

**Exchange Secretary:** J. A. GRANT, 11 Gordon Road, Edinburgh, 12.

**Editor of Journal:** J. E. WOODS, 2 Hengrave Rd., Honor Oak Park,  
London, S.E.23.

**Advertising, Publicity and Handbooks:** STANLEY F. COHEN,  
51 Westfield Road, Edgbaston, Birmingham, 15.



# B.N.A. from S.G.

## NEW BRUNSWICK

3	1851	6d. yellow. <b>Superb used</b> , good margins	... ..	£160
		Pair of <b>plate proofs</b> in black on card of the 1/-	... ..	£12
		A single <b>plate proof</b> in black on card of the 1/-	... ..	£6
9a	1860/63	1c. claret, horizontal pair, <b>Imperforate between vertically</b> , unused. Scarce	... ..	£23

## NOVA SCOTIA 1851-1853

**A fine clear strike on entire to New York of the red crowned circle 'PAID AT AMHERST N.S.', also 'ROBBINS-TOWN' c.d.s. in red and '11½' in MS.** ... .. £55

1	1853	1d. red-brown. <b>Very fine, lightly postmarked</b> example	... ..	£55
2	1851	3d. deep blue. <b>Fine used</b> , good margins	... ..	£18
2a & 5		<b>Bisected</b> 3d. deep blue <b>well tied</b> to small piece and used with 6d. yellow-green. B.P.A. certificate	... ..	£120
3		3d. bright blue. <b>Used. Superb</b> , with fine margins	... ..	£18
3a		Two examples of the 3d. (one creased), with <b>bisected</b> 3d. (7½d. rate to England) used on part entire. <b>Well tied</b>	... ..	£60
5		6d. yellow-green. <b>Light postmark and very fine</b>	... ..	£55
		Pair of <b>plate proofs</b> in black on card of the 1/-	... ..	£10

## PRINCE EDWARD ISLAND

4	1861	6d. yellow-green, <b>unused</b> , and <b>well centered</b> for this stamp	... ..	£16
21	1863/68	1d. yellow-orange, compound perf. 11 and 11½-12, O.G.	... ..	£12
22		2d. rose, compound perf. 11 and 11½, unused	... ..	£9
23		3d. blue, compound perf. 11 and 11½, unused	... ..	£8
30a	1867/68	3d. blue, mint horizontal pair <b>imperforate between vertically</b> . <b>Very fine</b>	... ..	£20
31a		4d. black, mint corner, marginal horizontal pair <b>imperforate between vertically</b>	... ..	£12
41b	1872	6c black, mint marginal horizontal pair, <b>imperf between vertically</b>	... ..	£18

OFFERED SUBJECT UNSOLD



*By Appointment to Her Majesty the Queen Philatelists*

# STANLEY GIBBONS LTD.

391 STRAND, LONDON, W.C.2.

Telephone: TEM. 9707